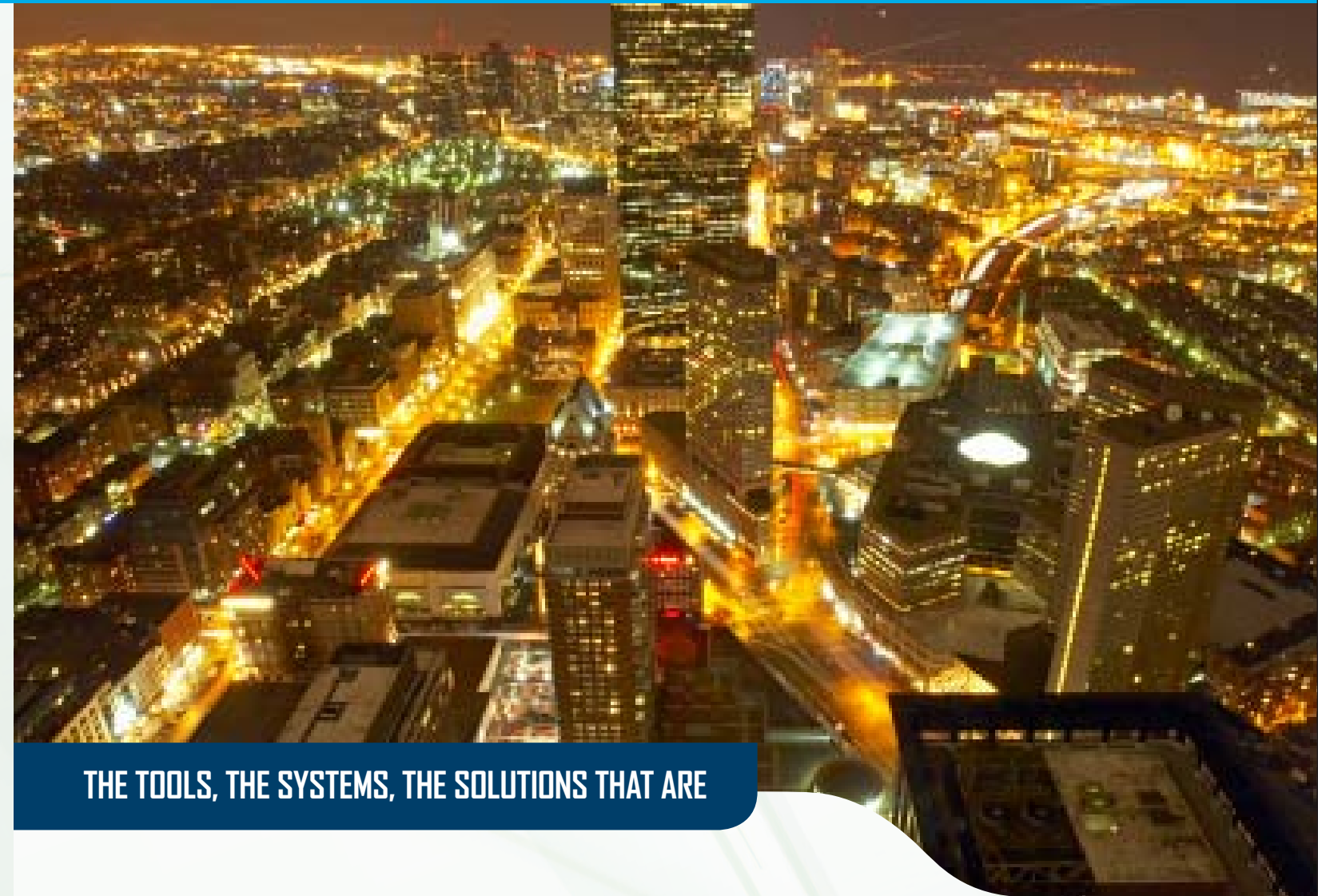
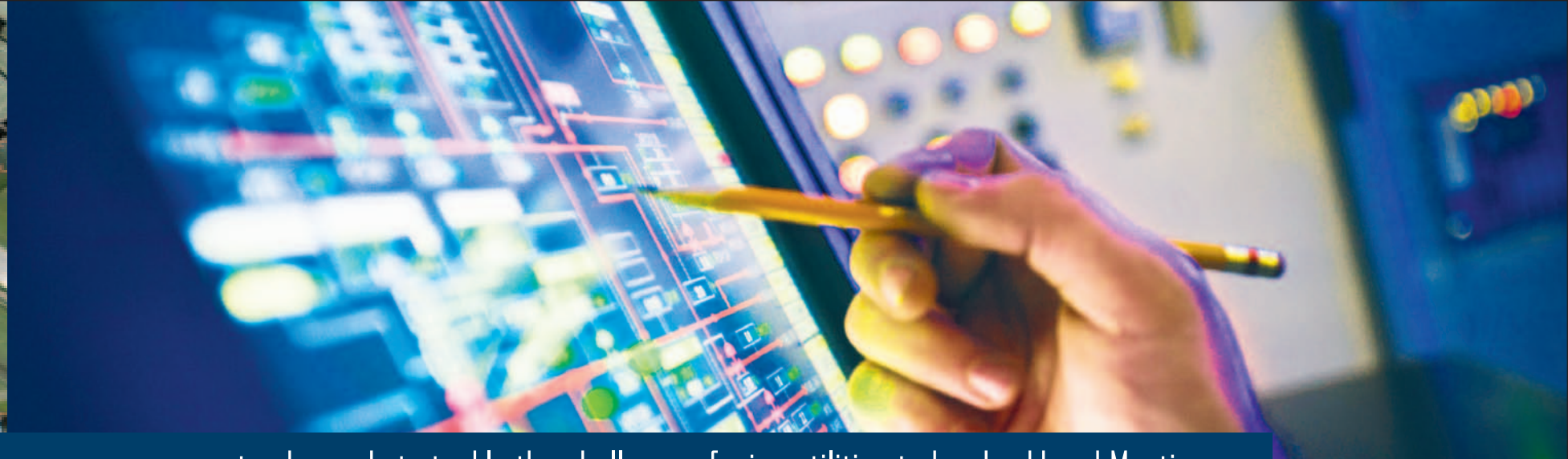


WE'RE ENGINEERING A
BETTER TOMORROW



THE TOOLS, THE SYSTEMS, THE SOLUTIONS THAT ARE

TRANSFORMING
LOAD MANAGEMENT



In the midst of the largest grid modernization in history, one company stands ready to tackle the challenges facing utilities today: Lockheed Martin.

WITH OVER 100 YEARS OF TECHNICAL INNOVATION AT WORK

we have the tools, the systems and the solutions to transform
the way energy is managed around the world.



SEEload is our advanced load management system that not only handles traditional demand response but also enables you to control demand side load as a resource, improve system reliability and create new economic opportunities.



**"SEEload is so precise that
we can geographically
curtail load right down to
an individual transformer."**

PRECISION

- Empirically measures actual load reduction in a real-time command and control system with a single operational view
- Provides pinpoint accuracy of demand side forecasting and event management to measurement and verification so you can curtail load for maximum benefit

FLEXIBILITY

- Integrates fully with your existing systems so there are no stranded assets
- Allows you to seamlessly migrate from legacy systems and equipment to modern systems and devices when you're ready
- Option to host the system at Lockheed Martin's secure data center or at your own data center

SECURITY

- Combines and integrates our cyber security best practices, software and tools to deliver robust load management to meet Critical Infrastructure Protection (CIP) requirements
- Provides the most cutting-edge security from the industry leader in cyber security

**"Demand Response
is becoming a vital
means of maintaining
system reliability
during peak load."**



SEEsuite puts Lockheed Martin's expertise in developing high-tech solutions for everything from complex missile defense systems to state-of-the-art air traffic control to work for the energy sector. It's all part of Lockheed Martin's commitment to advanced technical innovation.