

Troy Operations

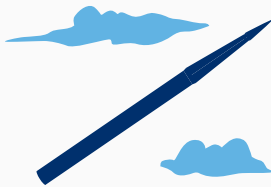
Lockheed Martin's Troy, Alabama, Operations facility in Pike County is a manufacturing, final assembly, test and storage operation for many of the missile programs supported by Lockheed Martin Missiles and Fire Control (MFC). The facility houses 54 buildings, with six of those being major production factories. These buildings total 923,843-square-feet spanning 3,863 acres.

The facility's 800+ employees support final assembly of MFC missiles, including Javelin, the Terminal High Altitude Area Defense (THAAD) Interceptor, the Joint Air-to-Surface Standoff Missile (JASSM), HELLFIRE missile and JAGM missile. It also manufactures missiles and hardware for a variety of development programs.



Headquartered in Troy, Alabama

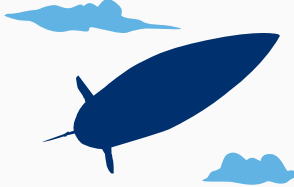
Mission Areas



THAAD Interceptor



JAVELIN Missile



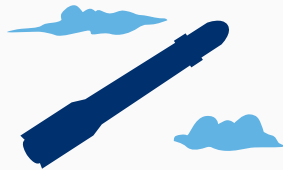
Air Dominance



LRASM



JASSM



HELLFIRE and JAGM Missiles

People & Footprint



800+ Total Headcount



6.9 Years of Service on Average



12% With Military Backgrounds



44% With Associate's Degree or Higher



In 2025, Troy Operations and its employees donated \$55,526 to local charitable organizations.