

Two Proven Platform Configurations

- Beechcraft King Air (C-12)
- Predator B (MQ-9)

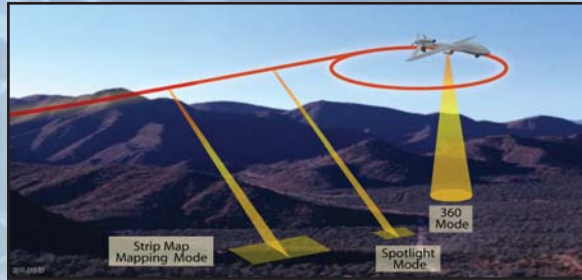
TRACER's image processing options allow for large area surveillance



SAR Technology on a UAS Platform for Greater On-station Time and Area Coverage.

Modes

- Strip Map
- Spotlight
- 360°



For more information contact:

Lockheed Martin Corporation
Mission Systems and Training (MST)

Tactical Reconnaissance and Counter-Concealment
Enabled Radar (TRACER)

623-925-6499

mark.t.wollgast@lmco.com

Lockheed Martin is an Equal Opportunity Employer

© Lockheed Martin Corporation, 2013

LOCKHEED MARTIN, LOCKHEED, and the STAR DESIGN {and any other marks used in the body of document} are either registered trademarks in the U. S. Patent and Trademark Office and or other countries through the world, or are trademarks and servicemarks of Lockheed Martin Corporation in the U.S. and or other countries.

Printed in the United States of America 05/13.

All Rights Reserved.



LOCKHEED MARTIN

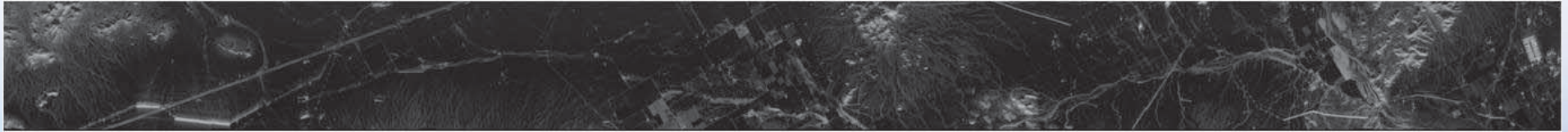


TRACER Airborne Counter-concealment Radar



DISTRIBUTION STATEMENT A.
Approved for public release.

Large Area Surveillance



Rugged Versatile LRU's

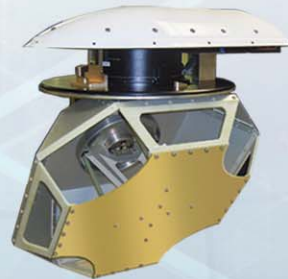
Weight and power optimized for versatility of installation on multiple platforms.

Radars system designed to operate in an unpressurized environment.

- 25,000 feet MSL
- +49° to -55°C



Digital Receiver Exciter (DRE)



Antenna/Gimbal



Transmitter (XMTR)



Signal Data Processor (SDP)

Aircraft Configurations



Equipment Configurations



Pod Configuration on Predator B (MQ-9)



Rack Configuration on C-12