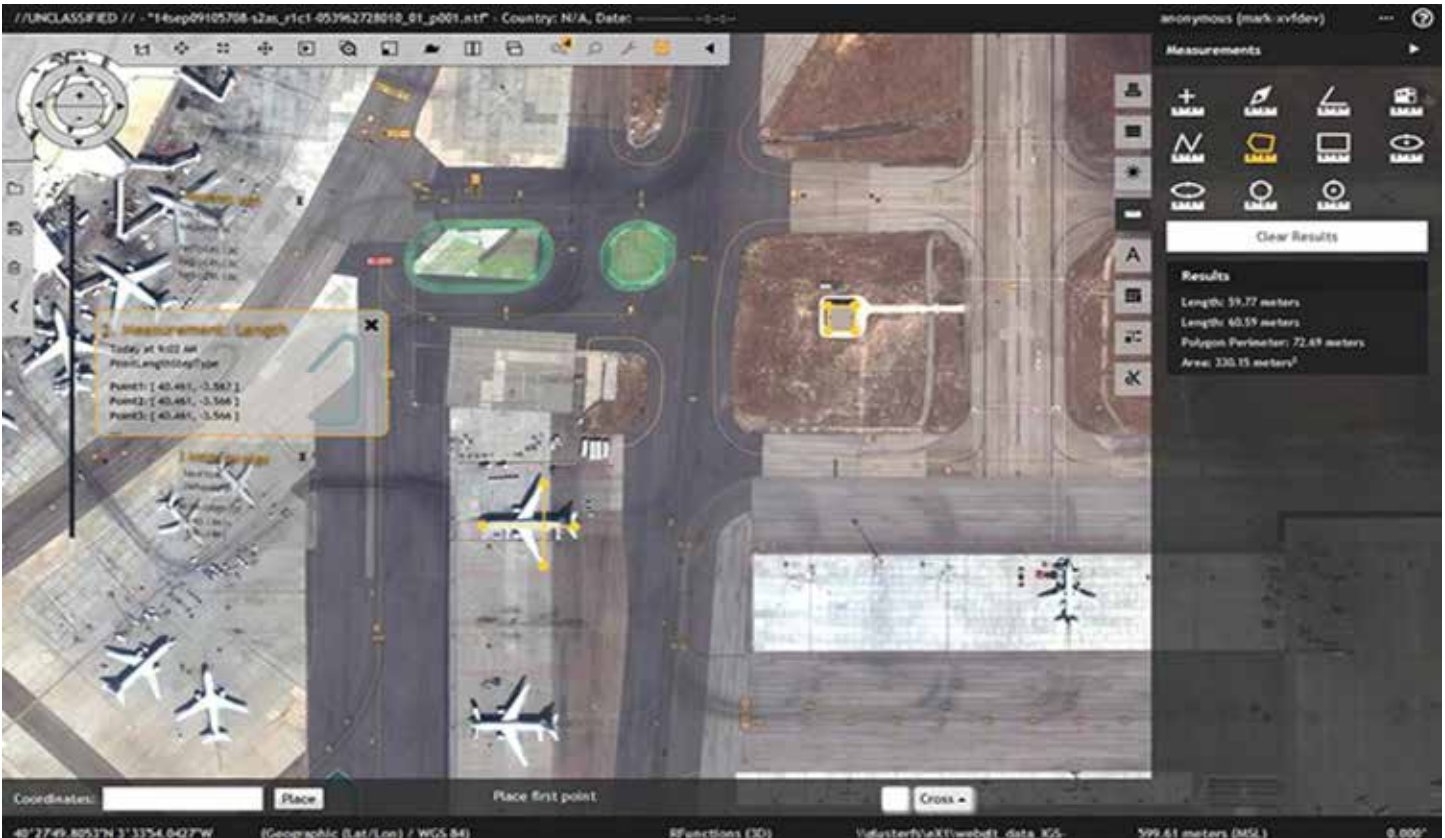


Measurement: Length

Today at 9:00 AM
PointLengthStepType
Point1: [40.461, -3.567]
Point2: [40.461, -3.566]
Point3: [40.461, -3.566]

eXPLOITATION VALUE FRAMEWORK (XVF)





eXPLOITATION VALUE FRAMEWORK (XVF)

In an era of increasing mission complexity coupled with increasingly tight budgets, on-demand access to GEOINT knowledge while broadening and deepening analytic capability needs to be optimized. Lockheed Martin’s XVF solution builds on tools and capabilities to enable analysts to share analytical results and products in real-time. XVF provides metrics for data, processing, and user interactions to help identify high-value areas and products, improving the efficiency of search and collaboration among analysts.

THE NEED FOR XVF

- Enable the statelessness of the production process to allow users to capture common workflows, rewind analysis and reuse!
- Allow leaders better insight into tool and system use providing more focused backlog prioritization.
- Provide opportunities for innovation and transformation of tradecraft that captivates end users.

© Lockheed Martin Corporation, 2016.
 LOCKHEED MARTIN, LOCKHEED, the star logo trademarks, used throughout are registered trademarks in the U.S. Patent and Trademark Office owned by Lockheed Martin Corporation.
 PIRA # DIS201506012

XVF VALUE

XVF delivers value to its users by providing analytics which enhances GEOINT production. XVF introduces a new way to perform exploitation leveraging technologies commonly used by Internet based companies.

| FEATURES | BENEFITS |
|------------------------------------|---|
| Collect Usage Metrics | <ul style="list-style-type: none"> • Identify commonly used workflows that can be automated • Insight into time spent on tasks, areas of the world, source data used, etc. • Unused services can be identified and removed from the baseline – reducing cost |
| Predictive Analysis | <ul style="list-style-type: none"> • Provide user tips on products, features and observations • Perform common processing tasks ahead of the user’s request |
| Automated Reporting | <ul style="list-style-type: none"> • Alert a user to new products, features and annotations with an AOI, enabling collaboration and knowledge sharing |
| Model Workflows and Best Practices | <ul style="list-style-type: none"> • Share models for workflows to other users for models • Enables process sharing to aid in knowledge retention |
| Stateless Production | <ul style="list-style-type: none"> • Reconstruct, reuse analysis methods • Record notes with input/output products to allow digital shoebox functionality without storing copies of the data |
| Quality Assurance | <ul style="list-style-type: none"> • Process used for exploitation to be approved/certified • QA review can be performed within a session • Enables global flagging of potential faulty input |

For more information about XVF, please contact rhonda.j.blatman@lmco.com